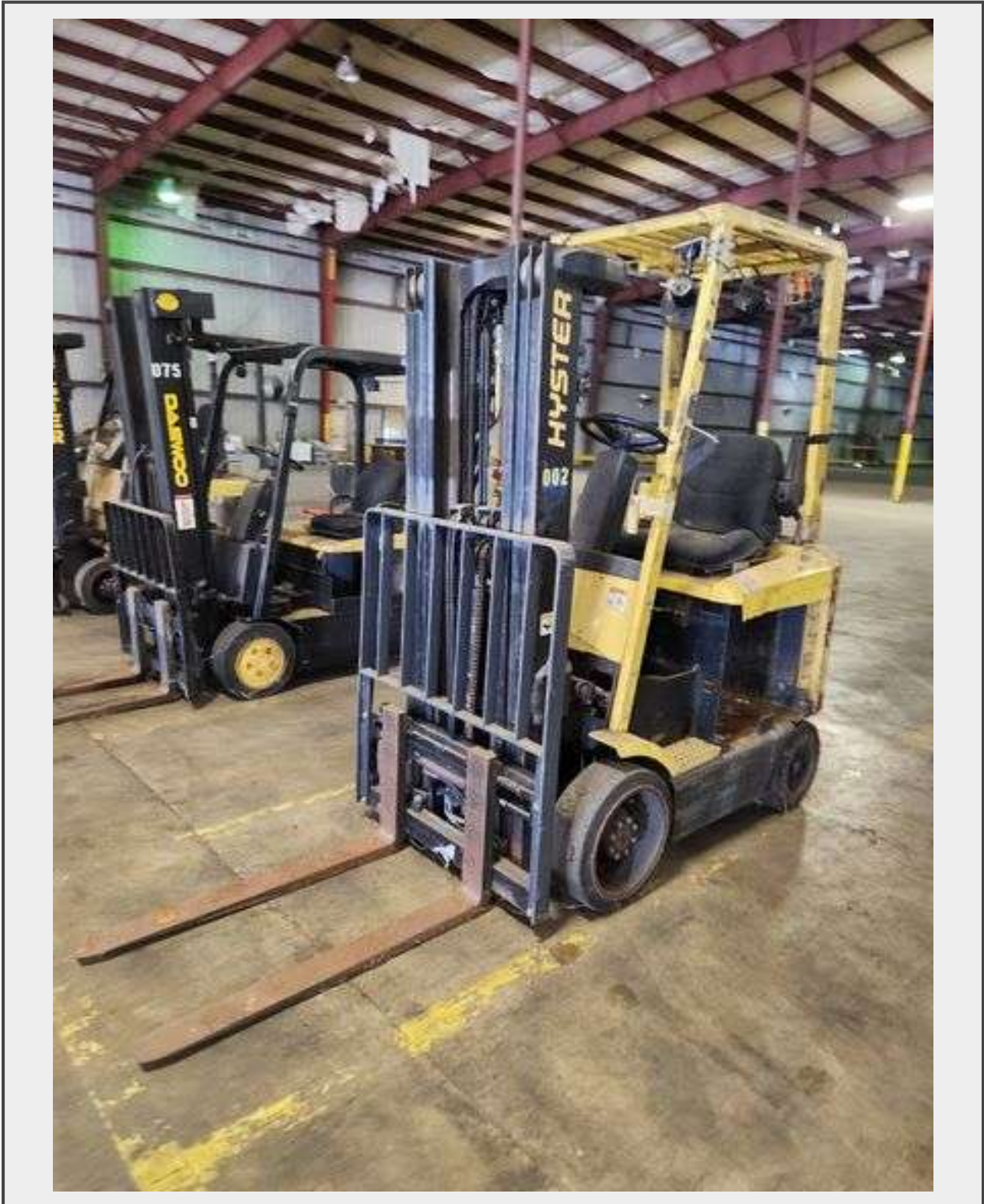


**Sale Name:** Libbey Glassware Factory Remaining Contents

**LOT 183 - HYSTER 4,500 lb Electric Forklift – Model E45XM2-27 – 189" Lift Height – NO BATTERY**



**Description**

**HYSTER 4,500 lb Electric Forklift – Model E45XM2-27 – 189" Lift Height – NO BATTERY**

Model: HYSTER E45XM2-27

Capacity: 4,500 lbs

Max Lift Height: 189"

⚖️ Weight Without Battery: 7,180 lbs

36 Volt System – **Battery NOT included**

Pulled from Libbey's forklift lineup. Units without active batteries were staged for deep charging and maintenance, but those batteries were liquidated separately. This forklift is sold *as-is* with no battery.

See all photos for specs and condition. Requires battery to operate.

**Quantity: 1**



<https://auctions.nexbid.com/>